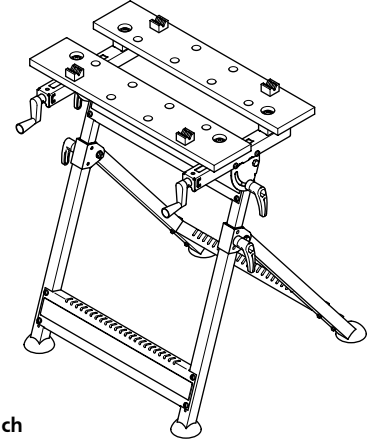


- Ⓛ Höhenverstellbarer Spann- und Arbeitstisch
- Ⓜ Height adjustable clamping and working table
- Ⓟ Etabli-étau pliant et réglable en hauteur
- Ⓡ In hoogte verstelbare span- en werktafel
- Ⓣ Tavolo di montaggio e lavoro regolabile in altezza
- Ⓛ Altura ajustable de la mesa de trabajo y sujeción
- Ⓟ Mesa de fixação e trabalho, ajustável na altura
- Ⓡ Højdeindstilleligt spænde- og arbejdsbord
- Ⓣ Højdställningsbart spänn- och arbetsbord
- Ⓡ Korkeussäädettävä kiinnitys- ja työpöytä
- Ⓛ Høydejusterbart fastspennings- og arbeidsbord
- Ⓡ Stół zaciskowo-roboczy z regulowaną wysokością
- Ⓡ Τραπεζι σύσφιξης και εργασίας ρυθμιζόμενο στο ύψος
- Ⓡ Yüksekliği ayarlanabilir çalışma masası ve büyütülebilir masa



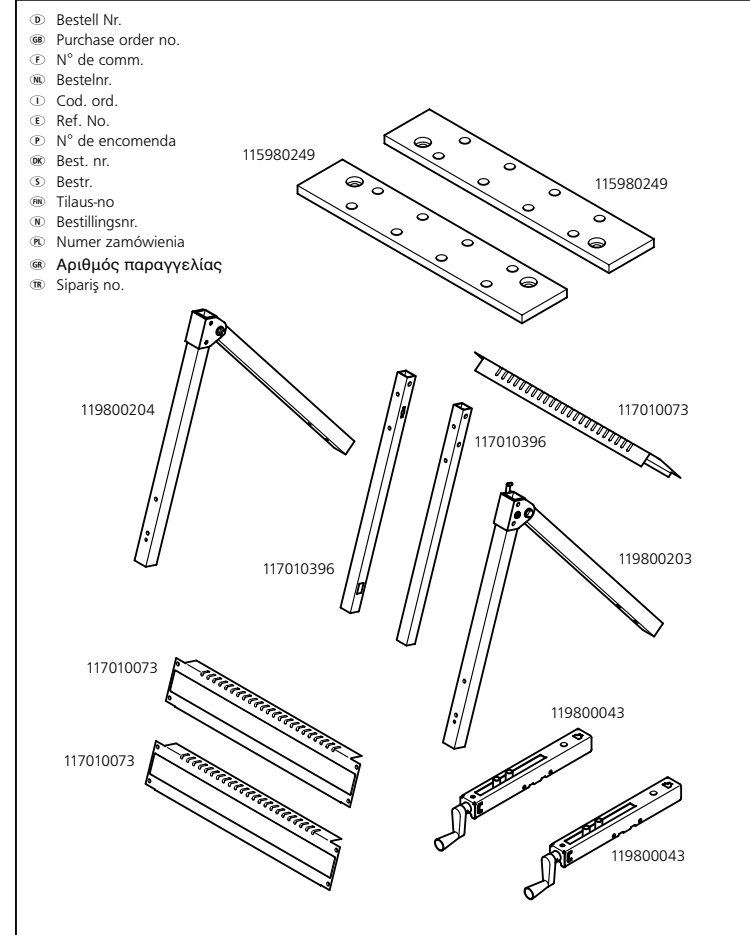
wolcraft® GmbH
D-56746 Kempenich
Germany
www.wolcraft.de



- Ⓛ Inhalt
- Ⓜ Contens
- Ⓟ Contenu
- Ⓡ Inhoud
- Ⓣ Contenuto

- Ⓛ Conteúdo
- Ⓡ Indhold
- Ⓣ Innehåll
- Ⓡ Sisältö

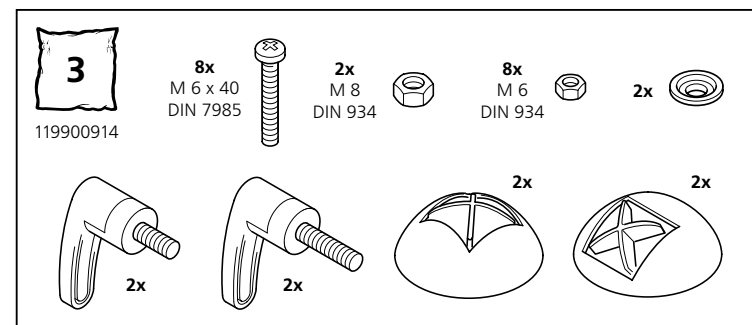
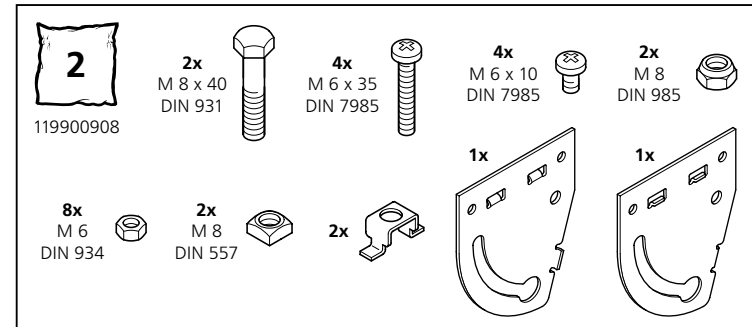
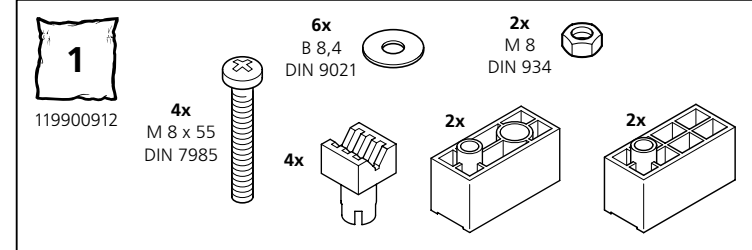
- Ⓡ Zawartość
- Ⓡ Περιεχόμενο
- Ⓡ İçerik



- Ⓛ Zubehörbeutel
- Ⓡ Accessory bag
- Ⓟ Sachet met accessoires
- Ⓡ Zakje met accessoires
- Ⓣ Sacchetto di accessori

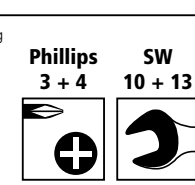
- Ⓛ Bolsa de accesorios
- Ⓡ Saco de acessórios
- Ⓡ Tilbehørspose
- Ⓡ Tilbehørspose
- Ⓡ Lisätarviketussi

- Ⓡ Opakowanie z osprzętem
- Ⓡ Σάκος εξαρτημάτων
- Ⓡ Aksesuar çantası



- Ⓡ Notwendiges Montagewerkzeug
- Ⓡ Necessary assembly tools
- Ⓡ Outils de montage nécessaires
- Ⓡ Noodzakelijk montage gereedschap
- Ⓡ Attrezzi necessari per il montaggio
- Ⓡ Herramientas de montaje necesarias
- Ⓡ Ferramenta de montagem necessária
- Ⓡ Nødvendigt montageværktøj

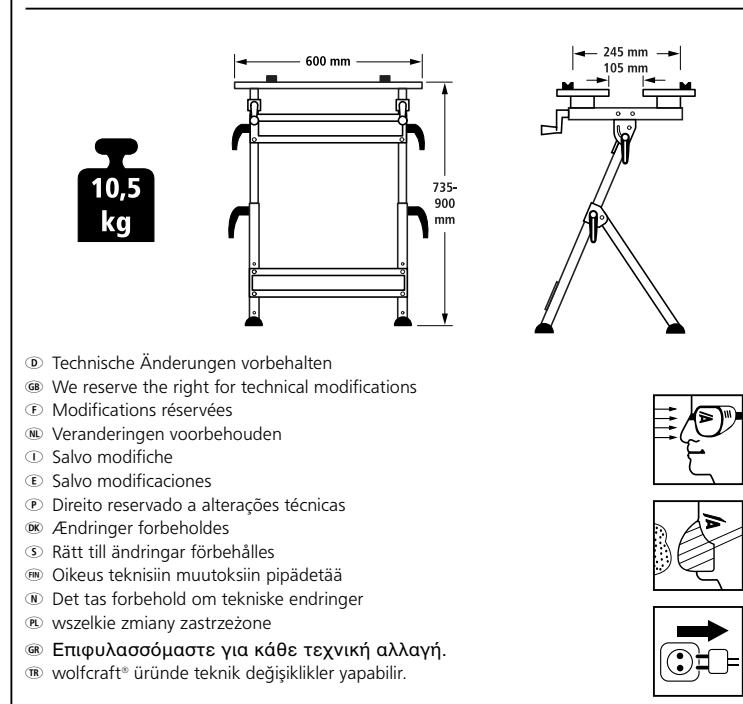
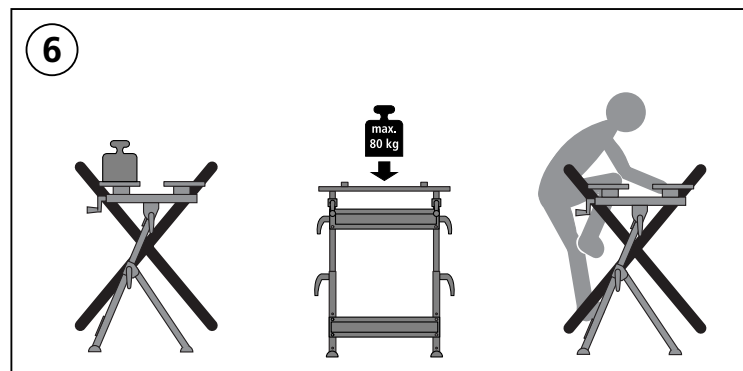
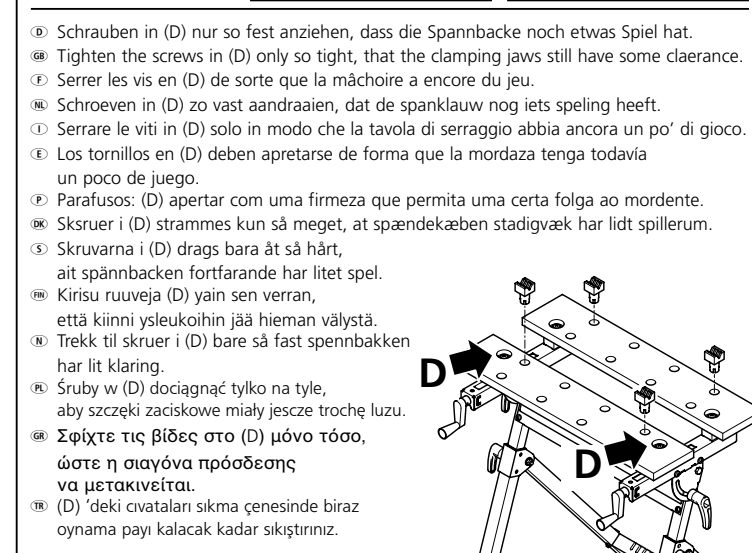
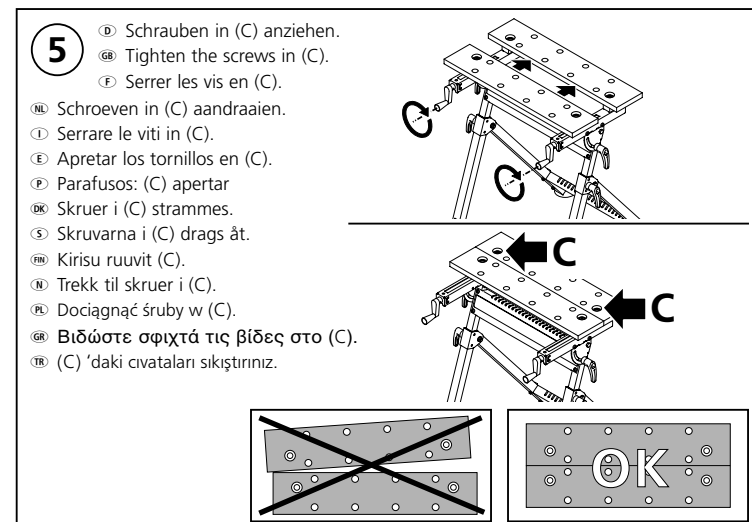
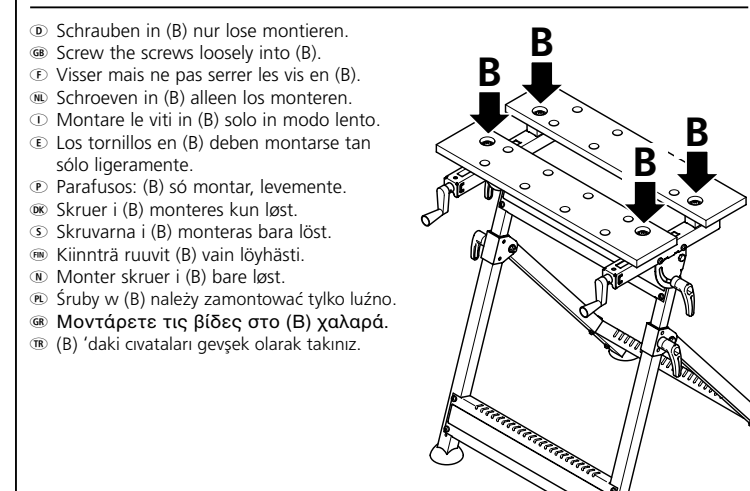
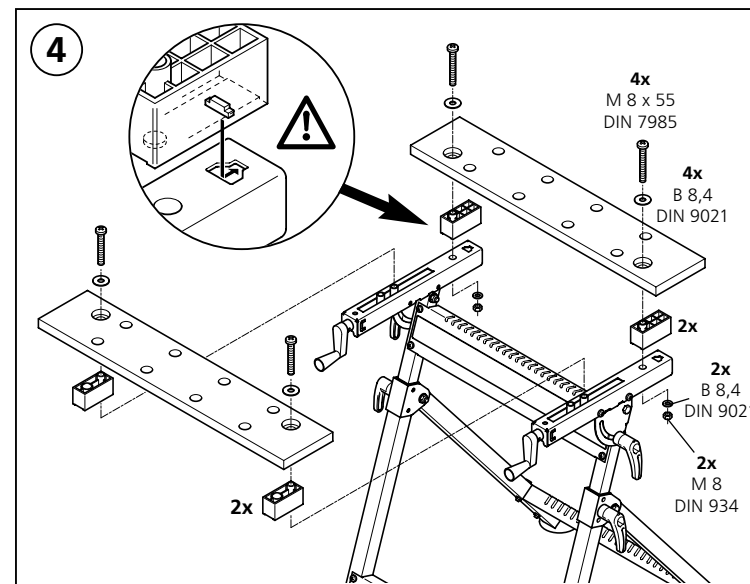
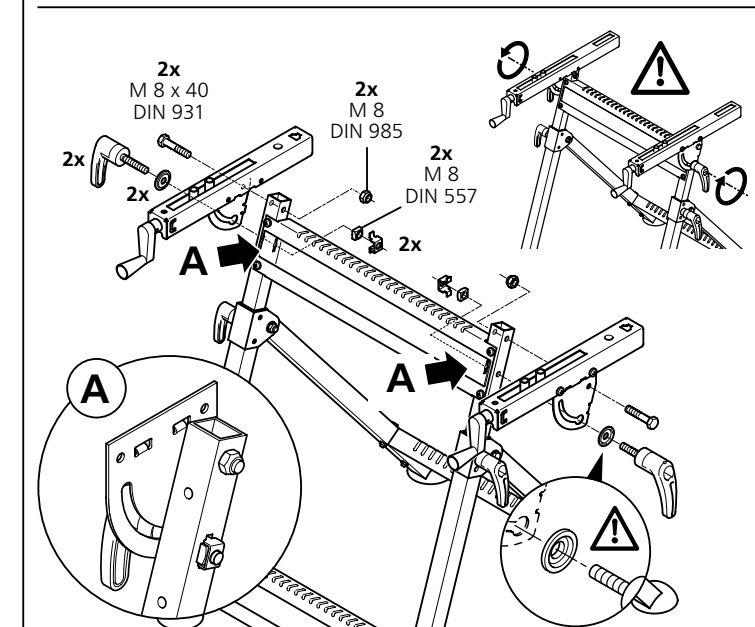
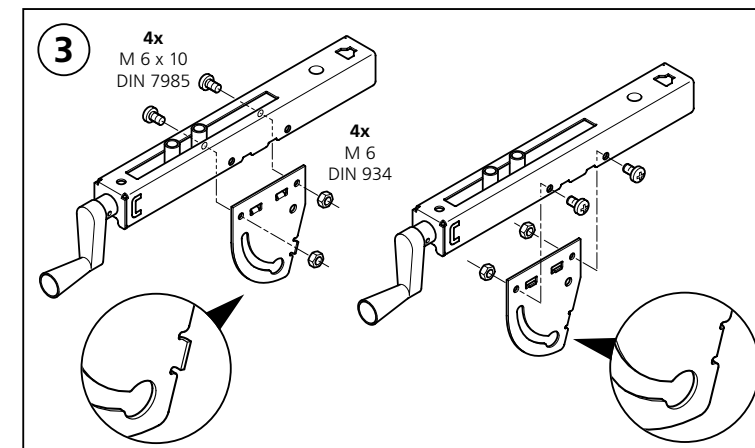
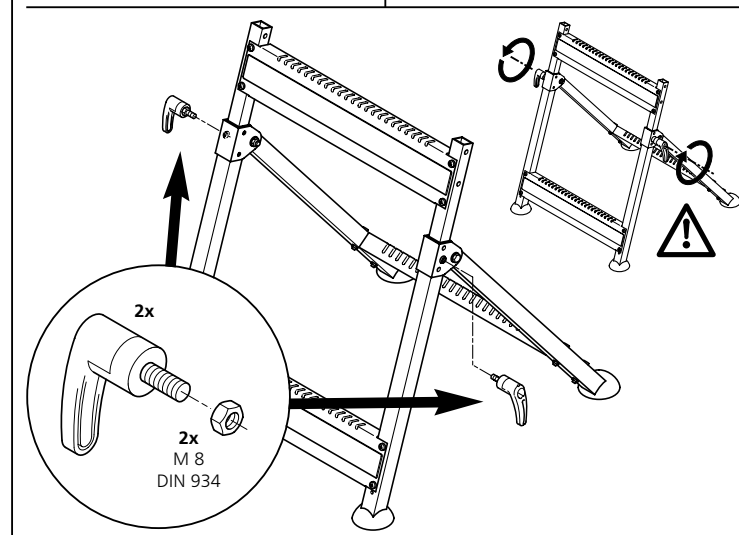
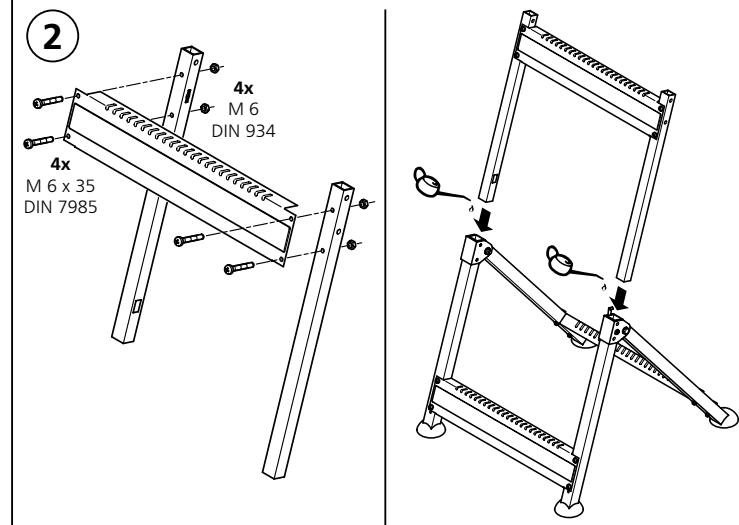
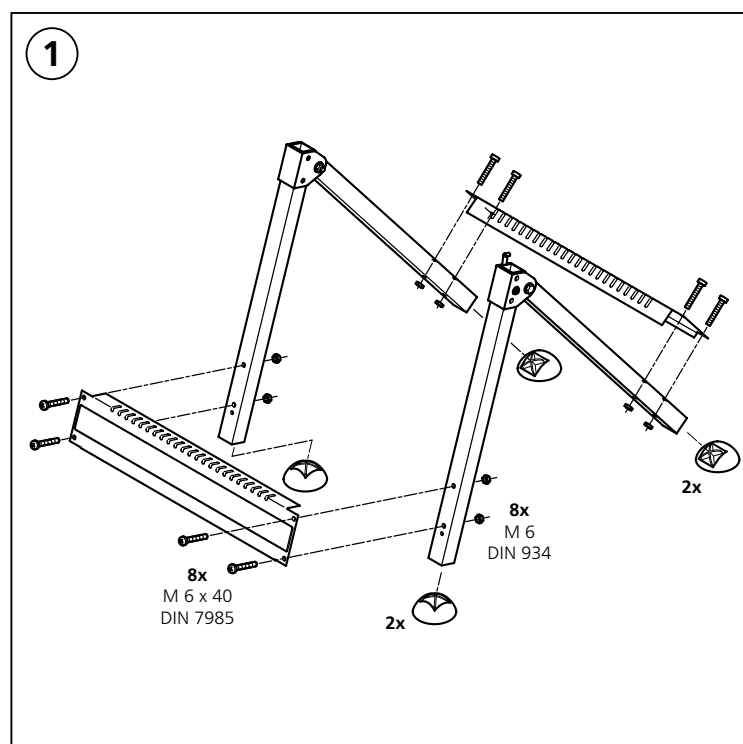
- Ⓡ Erforderliga monteringsverktyg
- Ⓡ Tarvittava asennustyökalu
- Ⓡ Nødvendig monteringsværktøj
- Ⓡ Opakowanie z osprzętem
- Ⓡ Απαραίτητα εργαλεία μονταρίσματος
- Ⓡ Montaj için gerekli takım



- Ⓡ Montageanleitung
- Ⓡ Assembly Instructions
- Ⓡ Instructions de montage
- Ⓡ Montage instructies
- Ⓡ Istruzioni per montaggio

- Ⓡ Instrucciones de montaje
- Ⓡ Instrução de montagem
- Ⓡ Monteringsanvisning
- Ⓡ Montagevejledning
- Ⓡ Asennus Käyttöohje

- Ⓡ Monteringsanvisning
- Ⓡ Opis montażu
- Ⓡ Οδηγίες μονταρίσματος
- Ⓡ Montaj talimatı



- Ⓡ Reklamationsgrund:
- Ⓡ Reason for claim:
- Ⓟ Objet de la réclamation:
- Ⓡ Reden voor de reclamatie:
- Ⓡ Motivo del reclamo:
- Ⓡ Motivo de la reclamación:
- Ⓡ Razão de reclamação:

- Ⓡ Reklamationsgrund:
- Ⓡ Reklamationskäl:
- Ⓡ Syv valitukseen:
- Ⓡ Reklamasjonsgrunn:
- Ⓡ Powód reklamacji:
- Ⓡ Αιτία παραπόνων:
- Ⓡ Talep sebebi:

- Ⓡ wolcraft® Gerät:
- Ⓡ wolcraft® equipment:
- Ⓟ Appareil wolcraft®:
- Ⓡ wolcraft® apparaat:
- Ⓡ Equipo wolcraft®:
- Ⓡ Aparelhos wolcraft®:

- Ⓡ wolcraft® apparat:
- Ⓡ wolcraft® maskin:
- Ⓡ wolcraft® laite:
- Ⓡ wolcraft® apparat:
- Ⓡ Wyrób wolcraft®:
- Ⓡ Μηχάνημα wolcraft®:
- Ⓡ wolcraft® Alet:
